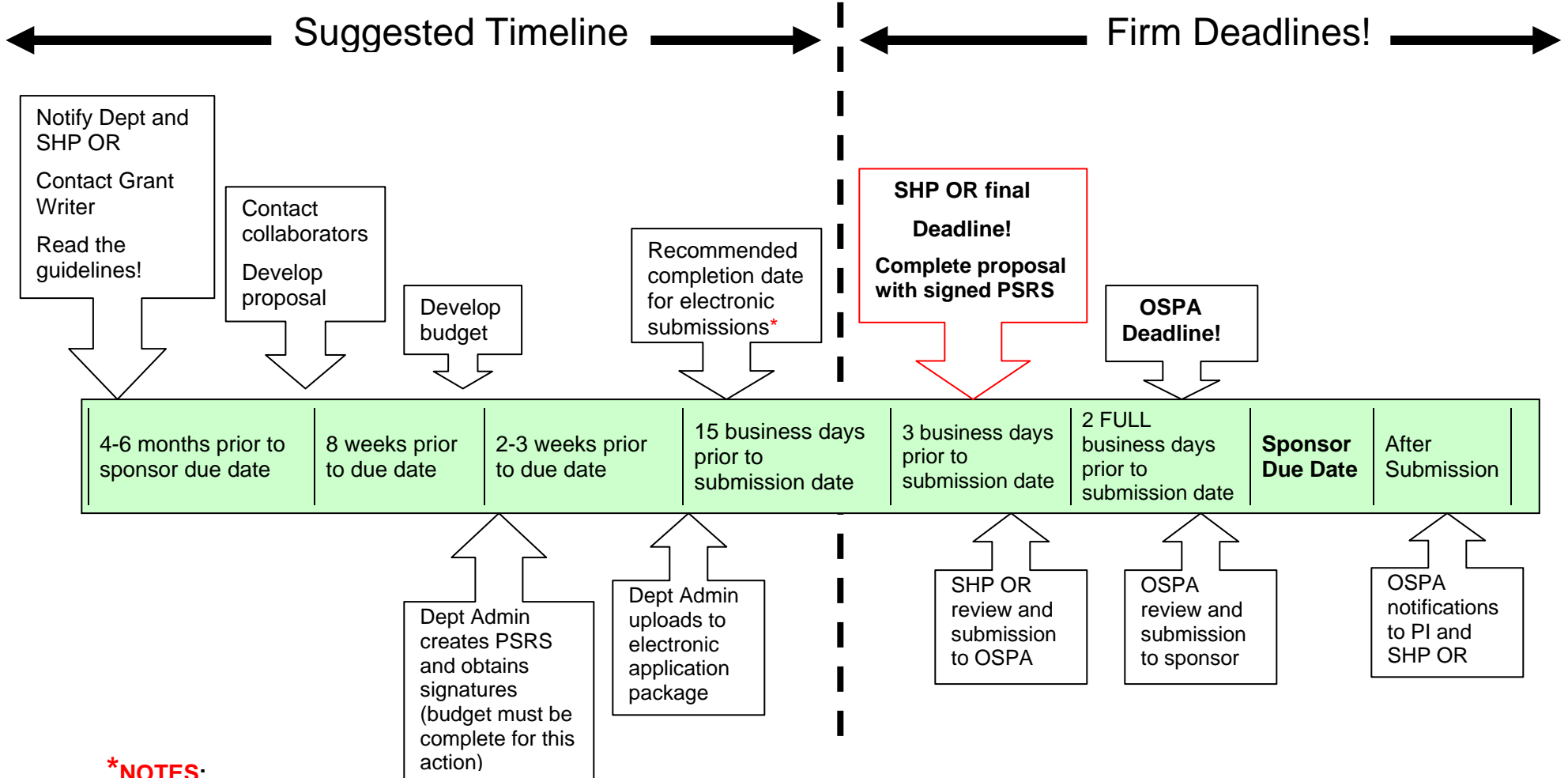


SHP Proposal Submission Timeline



- Investigators run a real risk of missing the proposal deadline if they attempt to submit proposals at the last minute.
- When technical difficulties arise, it can take as long as 15 days for an electronic submission to process.
- PI must remain available with internet and email access following the submission.
- NIH proposals: The 2-day correction window ***no longer applies***. All corrections must be made and the application resubmitted through Grants.gov and received at NIH eRA Commons by the published NIH due date.
- New investigators are strongly advised to follow the early submission guidelines and submit proposals to the SHP Office of Research no less than 15 days in advance of the submission date.